



High School Profile 2025-2026

THE SCHOOL

Established in Pudong, Shanghai, in 1998 by the Lutheran Church-Missouri Synod, Concordia International School Shanghai is a private, co-educational, international day school with English instruction. Upon graduation, students earn a US high school diploma.

CONTACT DETAILS

High School Principal: Ms. Laura Berntson
Assistant Principal: Mr. Everett Hill
Counselors:
Ms. Amanda Yu: amanda.yu@concordiashanghai.org
Mr. Oliver Turay: oliver.turay@concordiashanghai.org
Ms. Rachel Dooley: rachel.dooley@concordiashanghai.org
Ms. Shan Li: shan.li@concordiashanghai.org

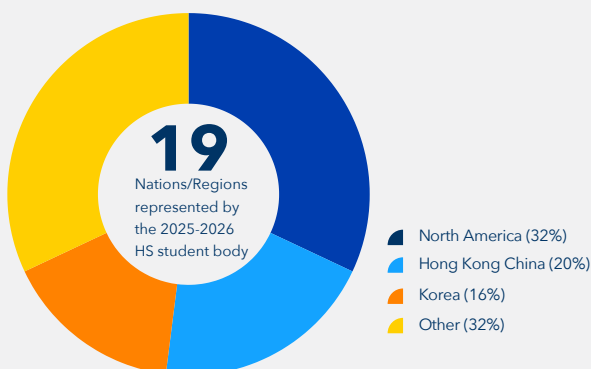
ACCREDITATION

Accredited by Western Association of Schools & Colleges (WASC) and National Lutheran School Accreditation (NLSA)
Member: ACAMIS, ALSS, AMCHAM, APAC, ASCA, CISSA, EARCOS, IACAC, NACAC, SISAC

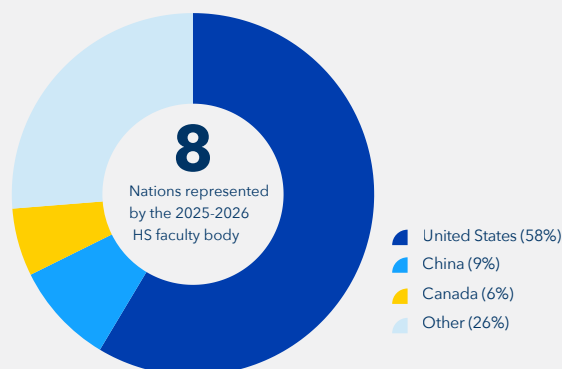
SCHOOL COMMUNITY

Enrollments PS – 12	1110
Enrollments 9 – 12	290
Total Faculty	163
Teaching Faculty 9 – 12	36
Size of 2026 Senior Class	68

STUDENT DEMOGRAPHICS



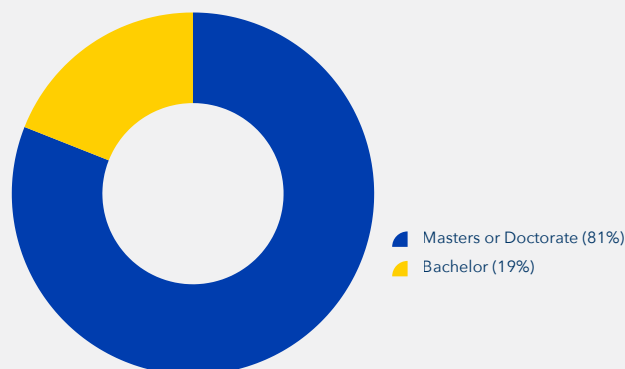
FACULTY DEMOGRAPHICS



FACULTY TEACHING EXPERIENCE

15.7 Average Years Experience

FACULTY DEGREE



GRADUATION REQUIREMENTS

Graduation from Concordia (Grades 9-12) requires the completion of the following high school course credits:

- 4 credits of English
- 3 credits of Social Studies
- 3 credits of Science
- 3 credits of Math
- 2 consecutive credits of World Language
- 2 credits of Fine Arts
- 0.5 credits of Health
- 2 credits of Physical Education (participation required each year while at Concordia)
- 2 credits of Identity & Spirituality (participation required each year while at Concordia)

Students are expected to take eight full semesters of classes, choosing additional courses of interest beyond graduation requirements to round out their schedules each year.

For students who do not complete all four years of high school at Concordia, eligible credits from their previous high school will be added to those courses completed at Concordia to determine when graduation requirements have been met.

CONCORDIA'S APPLIED LEARNING CURRICULUM

Launched in 2014, Applied Learning (AL) was designed to go beyond the boundaries of traditional Advanced Placement courses and to supplement our curriculum in a uniquely Concordia way.

The program was created for thoughtful and engaged 11th and 12th-grade learners offering university-level courses not typically available within the AP framework. Its purpose was to encourage students to ask bold questions like "how might we...?" and "wouldn't it be cool if...?" while exploring innovative fields such as Social Entrepreneurship, Engineering, and Big Data Analytics.

Distinctive Features

What sets Applied Learning apart is its emphasis on real-world, open-ended design challenges that culminate in tangible deliverables with impact beyond the classroom.

AL courses are built around three pillars:

- | | | |
|--|---|--|
| 1. Authentic Application | 2. Academic Rigor | 3. Process Skills (Learning by Doing) |
| • Open-ended challenges with deliverables and real-world benefits. | • Depth over breadth, patterned on upper-level college courses. | • Practicing skills of the field. |
| • Students engage with audiences beyond the classroom. | • Higher-order thinking skills embedded throughout. | • Experimenting with creative solutions. |
| | | • Building resilience and adaptability. |
| | | • Conducting field-specific research and analysis. |
| | | • Developing leadership and teamwork. |

In addition, AL courses often include:

- Learning experiences outside the classroom.
- Interdisciplinary connections across subjects.
- Opportunities to work with experts in the field.

GLOBAL ONLINE ACADEMY (GOA)

Consortium of the world's leading independent schools, who use online platforms as classrooms. GOA courses are open for enrollment to 11-12th graders; students in Grades 9-12 may opt to take additional language courses not offered on campus. Students may take one credit of GOA per academic year, with the option to take additional courses in the summer term.

CLASS RANK & GPA

- All instruction is in English with the exception of World Languages.
- Concordia uses a 4.0 grading scale. Only coursework completed at Concordia and through GOA are used in the calculation of a student's GPA.
- Concordia does not weight grades for AP, Applied Learning, or accelerated courses.
- Concordia does not rank students.
- An estimated percentile placement will be provided to assist in university admission decisions if requested.

AP COURSES ALLOWED

Students may take a maximum of nine AP courses over four years.

Grade 9 ▶ 1 Grade 10 ▶ 1 Grade 11 ▶ 3 Grade 12 ▶ 4

AP PASSING AVERAGES

228 Concordia High School students took 634 exams covering 25 subjects in May 2025. All students enrolled in an AP course are required to sit for the exam.

95%
Received 3, 4 or 5

AP RECOGNITION AWARDS

A total of 178 students received AP Scholar Recognition awards.

33 AP Scholars **19** AP Scholars with Honor
107 AP Scholars with Distinction **19** AP International Diploma

ACT & SAT RESULTS

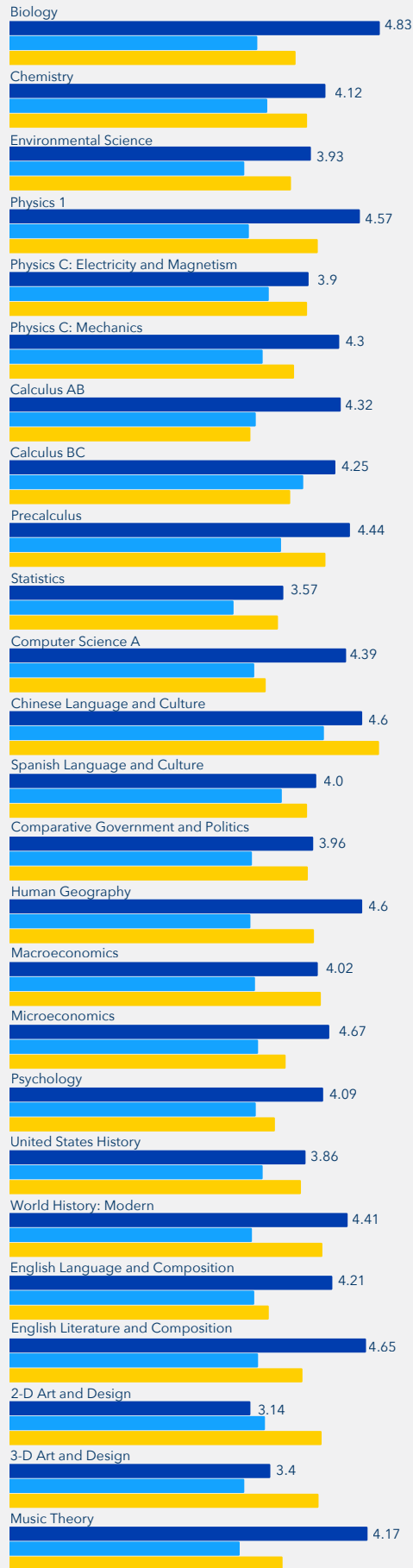
Results include students who are both native and non-native English speakers.

ACT & SAT Mean Score Comparison

ACT	SAT	
34 Concordia	1435 Concordia	
19 US National (2025)	1050 US National (2025)	
SAT Summary (n=79)	MIDDLE 50%	MEAN
EVIDENCE BASED READING & WRITING	660-750	704
MATH	700-790	731
TOTAL	1370-1500	1435

2025 AP RESULTS

■ Concordia Mean
■ Global Mean
■ China Mean



UNIVERSITY ACCEPTANCE AND MATRICULATION

The following is the list of colleges and universities that students from the classes of 2023-2025 were admitted to.

Institutions in bold indicate where students matriculated.

Concordia limits students to 12 applications to ensure each application is intentional. The Class of 2025 applied to an average of 7 colleges or universities per student.

UNITED STATES OF AMERICA

American University
Arizona State University
Art Center College of Design
Asbury University
Babson College
Baldwin Wallace University
Barnard College
Baylor University
Bentley University
Berklee College of Music
Biola University
Boston University
Brandeis University
Brown University
Bryn Mawr College
Butler University
California College of the Arts
Carnegie Mellon University
Case Western Reserve University
Central Washington University
Chapman University
Claremont McKenna College
Clark University
College of Charleston
College of Idaho
College of William & Mary
Colorado College
Columbia University
Concordia University Irvine
Concordia University, St. Paul
Cornell University
Dartmouth College
DePaul University
Drew University
Drexel University
Duke University
Elon University
Embry-Riddle Aeronautical University-Daytona Beach
Embry-Riddle Aeronautical University-Prescott
Emerson College
Emory University
Florida State University
Fordham University
Franklin Olin College of Engineering
Furman University
George Washington University
Georgetown University
Georgia Institute of Technology
Gonzaga University
Grand Valley State University
Greenville University
Hamilton College
Harvard University
Illinois Institute of Technology
Indiana University Bloomington
Johns Hopkins University
Kenyon College
Kettering University
Lawrence Technological University
Lehigh University
Lewis & Clark College
Loyola Marymount University
Loyola University Chicago
Macalester College
Marist University
Marquette University
Maryland Institute College of Art

Miami University
Michigan State University
Mount Holyoke College
Muhlenberg College
New York University
Northeastern University
Northwestern University
Occidental College
Ohio Wesleyan University
Oregon State University
Parsons School of Design - The New School
Pennsylvania State University, University Park
Pepperdine University
Pitzer College
Pomona College
Pratt Institute
Purdue University
Rensselaer Polytechnic Institute
Rhode Island School of Design
Rice University
Ringling College of Art and Design
Rutgers University - New Brunswick
Rutgers University - Newark
San Diego State University
Santa Clara University
Sarah Lawrence College
Savannah College of Art and Design
School of Visual Arts
Scripps College
Smith College
Southern Methodist University
Spring Arbor University
St. Olaf College
Stanford University
Stonehill College
Stony Brook University
Suffolk University
Syracuse University
Texas A&M University
Texas Tech University
The College for Creative Studies
The New School
The Ohio State University
The University of Texas at Austin
The University of Texas at Dallas
Truckee Meadows Community College
Tufts University
Tulane University
University of Arizona
University of California, Berkeley
University of California, Davis
University of California, Irvine
University of California, Los Angeles
University of California, Merced
University of California, Riverside
University of California, San Diego
University of California, Santa Barbara
University of California, Santa Cruz
University of Chicago
University of Cincinnati
University of Colorado Boulder
University of Connecticut

University of Denver
University of Florida
University of Houston
University of Idaho
University of Illinois at Chicago
University of Illinois at Urbana Champaign
University of Iowa
University of Kentucky
University of Maryland
University of Massachusetts Boston
University of Massachusetts Lowell
University of Massachusetts, Amherst
University of Miami
University of Michigan Ann Arbor
University of Minnesota Twin Cities
University of Mississippi
University of Nevada, Las Vegas (UNLV)
University of North Carolina at Chapel Hill
University of Northern Colorado
University of Notre Dame
University of Oregon
University of Pennsylvania
University of Pittsburgh
University of Redlands
University of Richmond
University of Rochester
University of San Diego
University of San Francisco
University of South Carolina
University of South Florida
University of Southern California
University of Southern Mississippi
University of Vermont
University of Virginia
University of Washington
University of Wisconsin, Madison
University of Wisconsin-Stout
Vassar College
Virginia Tech
Washington State University, Pullman
Wellesley College
Wentworth Institute of Technology
Wesleyan University
Western Washington University
Wheaton College
Wheaton College, Massachusetts
Williams College
Worcester Polytechnic Institute

CANADA

Carleton University
McGill University
McMaster University
Ontario Tech University
Queen's University
Simon Fraser University
The University of British Columbia, Vancouver
University of Alberta
University of Ottawa
University of Toronto
University of Waterloo
Western University
York University

UNITED KINGDOM

BIMM University
Durham University
Imperial College London
King's College London
Newcastle University
Queen Mary University of London
Solent University, Southampton
The University of Liverpool
University College Isle of Man
University College London
University of Birmingham
University of Bristol
University of Cambridge
University of East Anglia
University of Edinburgh
University of Exeter
University of Glasgow
University of Leeds
University of London
University of Manchester
University of Nottingham
University of Oxford
University of Sheffield
University of Southampton
University of St Andrews
University of Sussex
University of Warwick

AUSTRALIA

Griffith University
Macquarie University
The University of Sydney
University of Melbourne
University of New South Wales

ASIA

City University of Hong Kong
East China Normal University
Ewha Womans University
Fudan University
Hong Kong Baptist University
Hong Kong Polytechnic University
Hong Kong University of Science and Technology
Hosei University
International Christian University
KAIST - Korea Advanced Institute of Science & Technology
Keio University, Mita Campus
Korea University
Lingnan University
Nanyang Academy of Fine Arts
Nanyang Technological University
National University of Singapore
Raffles College of Higher Education
Seoul National University
Sogang University
Sungkyunkwan University
The Education University of Hong Kong
The University of Hong Kong
Waseda University
Yonsei University

Europe (non UK)

EHL Swiss School of Tourism and Hospitality (SSTH)